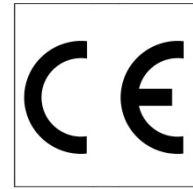
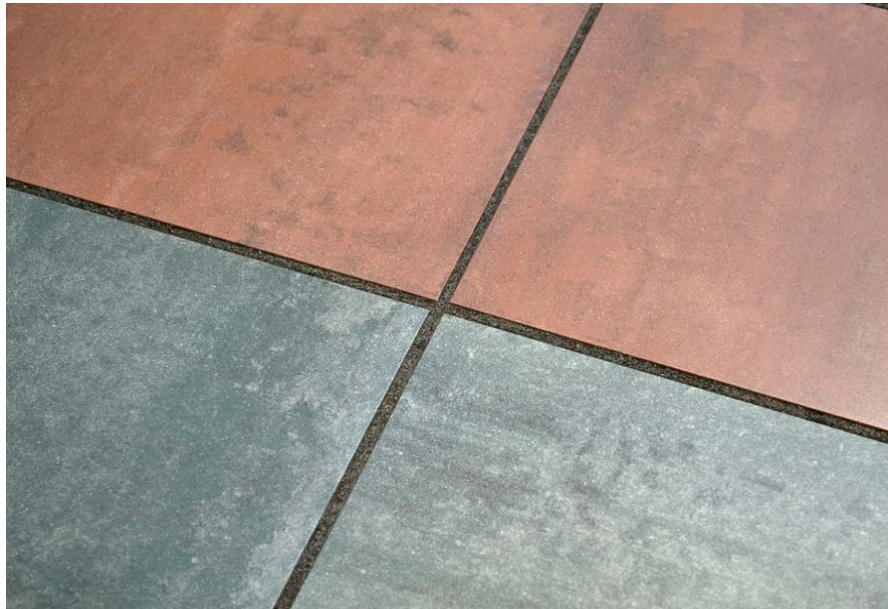


Beyem Fir Premium

Enhanced cement based tile adhesive
(C1E)



EN 12004-1



About this product

BEYEM FIR PREMIUM is an enhanced cement based tile adhesive (C1E), formulated with cement, selected aggregates, special additives and synthetic resins to improve workability, water retentivity, open time and adhesion. No vertical slip. Allows adjustment of tiles. Indoor environment quality. Classified as A+ class according to Décret n°. 2011-321 (France).

Benefits

- High resistance to water and heat.
- High water retentivity.
- High mechanical strength.
- Extended open time. Allows adjustment of tiles.
- Easy workable. Highly thixotropic.
- High tensile adhesion strength.
- No vertical slip.
- Very low VOCs emissions.

Use

Laying of small and medium ceramic tiles of medium and high absorption in interior walls and interior and exterior floors.

Substrates

BEYEM FIR PREMIUM is suitable for:

- Cement based substrates.
- Cement based renders /plasters and screeds.
- Concrete floors.

Preparation of substrates

Substrates must be clean, compact and free of substances that reduce adhesion such as dust, oil, grease and with no loose material. Uneven areas must be corrected with suitable smoothing and finishing products. Substrates must be free from any rising damp and have already completed the curing period of hygrometric shrinkage. Dampen substrates with water to cool down if they should be too warm, in case of wind or over absorbent substrates and wait until the thin layer of water disappears. Do not use on gypsum based plasters or paint.

Instructions for use

Mix manually of mechanically BEYEM FIR PREMIUM with 6,25-7,25 l per bag of clean water until a homogeneous, creamy and lump-free paste is obtained. Let the mix stand for 5 minutes before application.

Small tiles must be fixed using a notched trowel of 6x6 mm. For tiles sizes greater than 400 cm², a notched trowel 8x8 mm must be used. Spread the mixed product onto the substrate to a maximum surface area of 1 m² or no more than can be tiled within 30 minutes in normal conditions. Unfavorable environmental conditions (strong sunlight, drying wind, high temperature as well as a highly absorbent substrate), could drastically reduce this time to a few minutes. Bed the tiles firmly into the adhesive with a slight sliding and/or twisting action, to ensure a good contact and complete coverage.

It is good practice to lift an occasional tile after fixing, to verify that the required contact is being achieved. Back of the tile must be completely wet.

Cautions and recommendations

- On gypsum substrates, apply BEYEM FIJADOR primer before, to avoid contact between gypsum and the cement of the adhesive, avoiding adverse reactions.
- Do not apply on plastic, metal or wood.
- Do not apply below 5°C or above 30°C.
- Do not apply when there is risk of frost, rain, strong wind or direct sunlight.
- Leave joints between tiles with a minimum width of 2 mm. Grout with BEYEM JUNTA UNIVERSAL/BEYEM JUNTA EXTRAFINA.
- On floors with a surface area greater than 30 m², it is recommended to leave separation or sealing joints filled with a deformable material.
- On interior floorings larger than 15 m², it is advisable to keep a free perimeter expansion joint between the floor and the wall or pillar, hidden by a skirting board (of approximately 5 mm).
- The temperature, ventilation, and absorption of the substrate and covering materials, may vary the adhesive workability and setting times.

Technical data

Product identity. Properties of mixture and application data

Appearance	Powder
Color	White
Bulk density	≈ 1300 Kg/m ³
Density of the mix	≈ 1660 Kg/m ³
Grading	0-600 µm
Mixing water, %	± 27%
Pot life	≈ 2 h
Adjustability time	≥ 30 min
Grouting	≈ 24 h
Coverage	≥ 3,0 Kg/m ²
Tariff code	3824.50.90.00

Final performances

Type	C1E
Initial tensile adhesion strength	≥ 0,5 N/mm ²
Tensile adhesion strength after water immersion	≥ 0,5 N/mm ²
Tensile adhesion strength after heat ageing	≥ 0,5 N/mm ²
Tensile adhesion strength after freeze/thaw cycles	≥ 0,5 N/mm ²
Open time	30 min
Total VOCs (28 days)	≤ 500 µg/m ³

Packaging

BEYEM FIR PREMIUM is packed 25 kg plastic lined paper bags.

Storage: when stored unopened in a cool dry place, shelf life is 12 months from date of manufacture.

Cleaning tools

Tools can be cleaned easily with water before the product hardens. Hardened product can be removed only mechanically.

Project specification

Laying of ceramic tiles must be carried out with cement based adhesive compliant with EN 12004-1 - class C1E, such as Beyem Fir Premium manufactured by Rodacal Beyem company. The substrate must be compact, free from any flaky, loose parts and must be clean and cured, having already completed the shrinkage stage. Existing joints must be respected and elastic fractionizing and perimeter joints must be created. Ceramic tiles must be laid with joint-gap spacers with a width of ____ mm.

Health and Safety

For further and complete information about the safe use of our product please refer to our latest version of the Safety Data Sheet, which is available upon request.

Disposal of the product and packaging must be in accordance with current legislation. This is responsibility of the final product user.

Certifications



ER-1089/1999



IDI-0004/2012



Indoor Environment Quality

Certificate nº LQAI.MC. 58/15
EN 16000-09

Contact



www.rodacal.com



rodacal@rodacal.com



967 44 00 18

Note

Product for professional use

The above guidelines and information is accurate to the best of our knowledge and is offered in good faith. This information is true and accurate, but as conditions of use and any labour involved are beyond our control, the end user must satisfy himself by prior testing that the product is suitable for his specific application, and no responsibility can be accepted, or any warranty given by our Representatives, Agents or Distributors. End user should ensure that he has our latest literature, copy of which will be sent upon request.